

GENERAL NOTES

- 1. ROOF-SUSPENDED OIL REEL SUPPORT FRAME. PROVIDE STRUCTURAL STEEL FRAMING AS DETAILED TO SUPPORT OWNER-FURNISHED OIL REELS AND ASSOCIATED DESIGN LOADS. COORDINATE FINAL MOUNTING REQUIREMENTS, LOCATIONS, AND CLEARANCES WITH OWNER-FURNISHED EQUIPMENT.
- 2. CONTRACTOR SHALL PREPARE AND SUBMIT SHOP DRAWINGS FOR REVIEW. COORDINATE ALL CONNECTIONS, SUPPORTS, AND LOADS WITH THE PRE-ENGINEERED METAL BUILDINGS (PEMB) MANUFACTURER AND INCLUDE ALL REQUIRED REINFORCEMENTS IN PEMB SHOP DRAWINGS.
- 3. CONTRACTOR SHALL VERIFY EQUIPMENT WEIGHTS AND SUPPORT REQUIREMENTS PRIOR TO FABRICATION. NOTIFY ARCHITECT OF ANY DISCREPANCIES BETWEEN THE CONTRACT DOCUMENTS AND EQUIPMENT REQUIREMENTS.

KEYNOTES TO SHEET

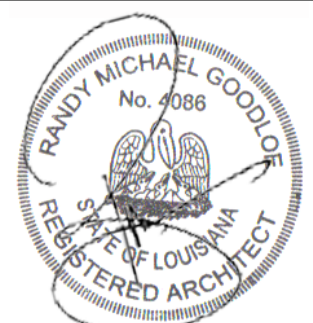
- 1. ROOF DECK AND PURLINS AS DETAILED. SEE STRUCTURAL.
- 2. STRUCTURAL STEEL FRAME AS DETAILED. SEE STRUCTURAL.
- 3. 4"x3"x3/8" GALV. HSS TUBE WELDED TO STEEL ANGLES AT BEAM WEBS ON EACH SIDE OF BEAM. ALL STEEL TO BE PAINTED IN COLOR AS SELECTED BY OWNER.
- 4. 8"x4"x3/4" GALV. STEEL ANGLE WELDED TO BEAM WEB FOR HSS TUBE STEEL CONNECTION ON EACH SIDE OF WEB. ALL STEEL TO BE PAINTED IN COLOR AS SELECTED BY OWNER.
- 5. W8x15 GALV. STEEL BEAM WELDED TO HSS TUBE STEEL FOR OIL REEL SUPPORT. GALV. STEEL ANGLES TO BE WELDED ON EACH SIDE OF WEB TO WELD CONNECTION OF HSS TUBES. ALL STEEL TO BE PAINTED IN COLOR AS SELECTED BY OWNER.
- 6. 4"x3"x3/8" GALV. HSS CROSS BRACING AT TOP, MIDPOINT, AND BOTTOM OF PARALLEL HSS TUBE STEEL. ALL STEEL TO BE PAINTED IN COLOR AS SELECTED BY OWNER.
- 7. 4"x3"x3/8" GALV. HSS CENTER CROSS BAR WELDED TO MIDPOINT CROSS BRACING. ALL STEEL TO BE PAINTED IN COLOR AS SELECTED BY OWNER.
- 8. OIL REEL PROVIDED AND INSTALLED BY OWNER.
- 9. PEMB STRUCTURAL BRACING. SEE STRUCTURAL.



RANDY M. GOODLOE, AIA, APAC
725 KIRBY STREET
LAKE CHARLES, LOUISIANA

OFFICE: 337.436.3036
FAX: 337.436.3773

ARCHITECT



LA. LICENSE NO. 4086

NEW CONSTRUCTION
FORD PRO
FOR
MIKE WILLIS
2010 PATTON ST.

© COPYRIGHT 2026,
RANDY M. GOODLOE, A.I.A. APAC
ALL INFORMATION, EITHER DRAWN, WRITTEN,
OR IMPLIED APPEARING IN THIS DOCUMENT
SHALL NOT BE DUPLICATED, DISCLOSED, OR
OTHERWISE USED WITHOUT THE WRITTEN
PERMISSION OF THE AUTHOR, RANDY M.
GOODLOE, AIA, APAC. THIS DOCUMENT IS AN
INSTRUMENT OF SERVICE AND IS THE SOLE
PROPERTY OF THE AUTHOR. FURTHERMORE,
THE USE OF THIS DOCUMENT FOR ANY
PURPOSE SHALL BE REVOKED, IF THE INTENT
OF THE DESIGN OR THE CONSTRUCTION
TECHNIQUES OR DETAILS SHOWN HEREIN
ARE NOT ADHERED TO OR THE
CONTRACTUAL AGREEMENT GOVERNING
THEIR USE ARE NOT STRICTLY ADHERED TO.

PROJECT NO.

25012

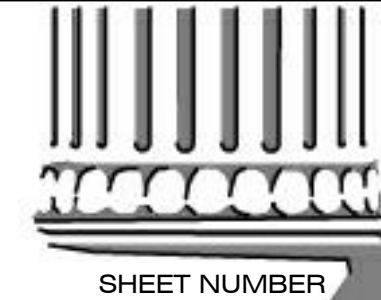
PROJECT MANAGER

TM

DATE ISSUED

2026.05.22

REVISED



SHEET NUMBER

A-419

ENLARGED DETAILS -
REEL SUPPORT RACK